

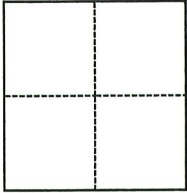
CORNER RECORD

Agency Index ADJ DW # 19-108
 Document Number ADJ 048-232-57-2 ADT

City of MILL VALLEY County of MARIN, California
 Brief Legal Description STANDARD COUNTY MONUMENT SHOWN ON 20 OS 07.

CORNER TYPE

COORDINATES (Optional)



- Government Corner
- Meander
- Rancho
- Control
- Property
- Other

Date of Survey July 15, 2019

N. _____ E. _____
 Elevation _____
 Units Metric U.S. Survey Foot
 Horizontal Datum _____
 Zone _____ Epoch Date _____
 Vertical Datum _____
 Complies with Public Resources Code §§8801-8819
 Complies with Public Resources Code §§8890-8902

PLS Act Ref.: 8765(d) 8771 8773 Other:
 Corner/Monument: Left as found Established Rebuilt Pre-Construction
 Found and tagged Reestablished Referenced Post-Construction

Narrative of corner identified and monument as found, set, reset, replaced, or removed:
 See sheet #2 for description(s):

FOUND STANDARD COUNTY MONUMENT SHOWN ON 20 OS 07 NEAR LOT 32 AS SHOWN ON MAP 4 RM 76. SET FOUR REFERENCE TIES; RE-ESTABLISHED WITH COUNTY OF MARIN WELL MONUMENT PER UCS DWG #300. (SEE ATTACHED SKETCH) NO DETERMINATION WAS MADE AS TO THE VALIDITY OF THE MONUMENT SHOWN HERON OR ITS RELATION TO PROPERTY LINES IN THE AREA.

SURVEYOR'S STATEMENT

This Corner Record was prepared by me or under my direction in conformance with the Professional Land Surveyors' Act on 06/20/22
 Signed [Signature] P.L.S. or R.C.E. No. 9292



COUNTY SURVEYOR'S STATEMENT

This Corner Record was received 9/5/2019
 and examined and filed 6/20/22
 Signed T. W. Park P.L.S. or R.C.E. No. 8176
 Title County Surveyor



County Surveyor's Comment

A.P.N.
048-233-74
#47 SKYLINE TERRACE

A.P.N.
048-233-35
#39 SKYLINE TERRACE

A.P.N.
048-233-65
#33 SKYLINE TERRACE

LOT 20
4 RM 76

LOT 21
4 RM 76

LOT 22
4 RM 76

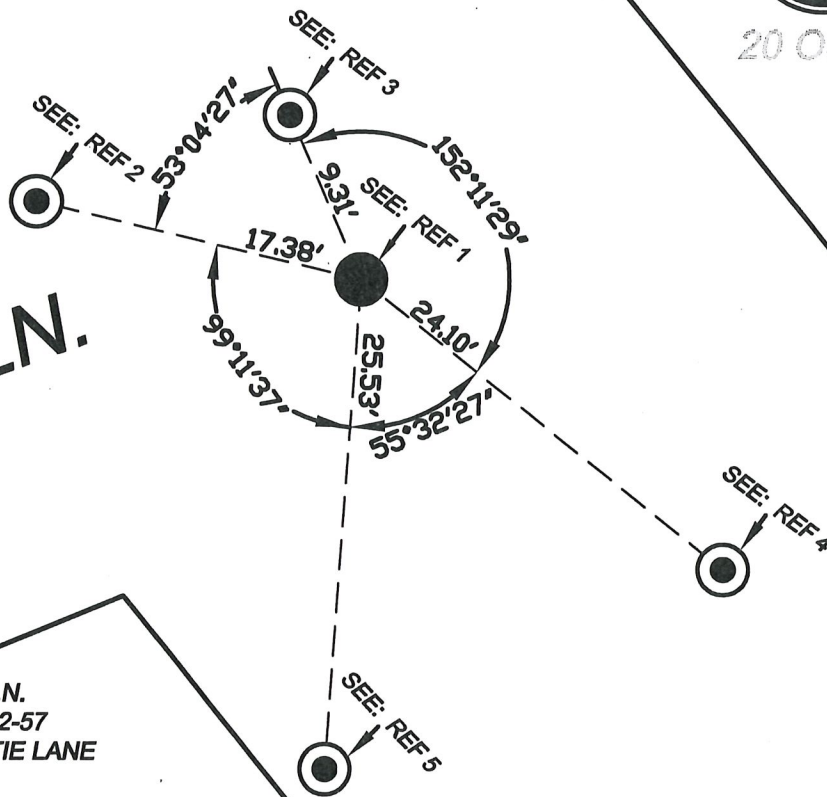


20 OS 07

LATTIE LN.

A.P.N.
048-232-57
#1239 LATTIE LANE

LOT 32
4 RM 76



- REF 1: FOUND 2" DISC IN STANDARD COUNTY MONUMENT WELL STAMPED "R.C.E. 8180" PER 20 RS 07 REPLACED WITH COUNTY STANDARD MONUMENT PER UNIFORM CONSTRUCTION STANDARDS DRAWING #300.
- REF 2: SET MAG NAIL AND WASHER STAMPED "MARIN COUNTY SURVEYOR " ON TOP OF ASPHALT BERM.
- REF 3: SET MAG NAIL AND WASHER STAMPED "MARIN COUNTY SURVEYOR " ON TOP OF ASPHALT BERM.
- REF 4: SET WOOD HUB WITH MAG NAIL AND WASHER STAMPED "MARIN COUNTY SURVEYOR " ON SHOULDER OF ROAD.
- REF 5: SET WOOD HUB WITH MAG NAIL AND WASHER STAMPED "MARIN COUNTY SURVEYOR " ON SHOULDER OF ROAD.

COUNTY OF MARIN
DEPARTMENT OF PUBLIC WORKS
SURVEY SECTION

SCALE: 1"=10'

CORNER RECORD

JOB No. 2019-28